



## Professional PU ESD Antistatic Laboratory Stool With Aluminum Base Round Black Rotated Chair For Industry Garage Institution Bar

Our Product Introduction

for more products please visit us on [pufoammanufacturing.com](http://pufoammanufacturing.com)

### Basic Information

- Place of Origin: China
- Brand Name: BER
- Certification: SGS/EN71
- Model Number: BER-166
- Minimum Order Quantity: 100pcs
- Price: According to the design ,size and quantity
- Packaging Details: 1pcs a opp bag /10pcs a carton
- Payment Terms: Western Union, T/T, L/C, MoneyGram



### Product Specification

- Backrest: Yes
- Armrest Type: Adjustable
- ESD Version: System Resistance 10E5 ——10E8 Ω
- Samples Time: 5~7 Days After Confirmed PP And PI
- Seat Width: 20 Inches
- Weight Capacity: 300 Lbs
- Type: Lab Chair
- Height Adjustable: Yes
- Dimensions: Customized Design Is Acceptable
- Mass Production Time: 15~18 Days According To Quantity
- Swivel: Yes
- Armrest Height: 25-30
- Weight: 25 Lbs
- Assembly Required: Yes
- Seat Size: 38.5



### More Images



## Product Description

Details :ESD chairs / Industry Chairs / Anti-esd chairs /PU foam chairs /Lab chairs

Professional PU **ESD** Antistatic Laboratory Stool With Aluminum Base **Round** Black Rotated **Chair** for Industry  
Garage Institution Bar

Material	Polyurethane( PU in short )
Artworks	Our design team make artwork for confirmation and suggest the best method. We can offer 3D design for customer's confirmation. We can develop the items according to customer's samples.
Processes	PU foaming method . (Customers can have theirs own request of the hardness ,colors ,size ,attachment and so on )
Seat Size(w*d):	410*400mm
Back Size(w*h):	360*250mm
Finishing	Hand polish / Color filling /
Logo	Debossed logo / CMYK imprinting / Laser engraving /offset imprinting
Function:	Backrest forward and backward adjustment
Usage	For promotion / personal use / retail/ wholesales
Attachment :	Metal keyring / single ring / dog tags /double ring /heart shape rings
Height Adjustable Range:	440-580mm(distance from seat to ground)
Ring:	Φ420mm/fixed on base
Base:	Φ560mm /25mm High-quality cold-rolled steel pipe stamping forming. electroplating
Wheels:	PA Nylon, stud or castor optional
ESD Version:	system resistance 10E5 ——10E8 Ω
Payment	T/T . West Union bank .Paypal . L/C
OEM/OEM	Yes .Custom designs are highly appreciated
Samples time	5~7days after confirmed PP and PI
Mass production	15~18days according to quantity
Shipment	Vai our courier account / By sea of customer forwarder / DHL .FedEx / TNT /EMS /Air and so on

# ANTI-STATIC PU CHAIR

Elaborate | Comfortable | Well-know brand |

|Service guarantee|



## ANTISTATIC AND VENTILATING CUSHION



HIGH BREATH PERMEABILITY | LEISURELY BOTTOCKS









PRODUCTS DETAILS



Annotate ergonomic design

HILLTOP OF HUASHAN  
∨

 ECO-FRIENDLY MATERIAL	 MUTE WHEEL	 RENITENCY ANTI-FALL PROTECTION
 COMFORTABLE HIGHLY BREATH	 ANTI-STATIC	 STURDY AND DURABLE RAW MATERIAL



## SGS AUTHENTICATED EXPLOSION PROOF PNEUMATIC ROD

Thickness:2mm Professional testing|safety and durable



SGS Embossed stamp



## SAFETY AND EXPLOSION PROOF



PASS 500KGS PRESSURE TEST





THE ERGONOMIC DESIGN ENABLE USERS TO WORK LONG TIME

WITHOUT FATIGUE | COMFORTABLE



【HIGHLY BREATH】



【SMOOTHLY WHEEL】



【UP AND DOWN ADJUSTABLE】

## WHY ARE THEY SO OUTSTANDING



120,000<sub>TURN</sub>

ROTATING TEST



100,000<sub>CIRCLE</sub>

IMPACT TEST

WE HAVE PAST THE TEST OF ANSI/BIFMA X5.1

QUALITY INSPECTION STANDARD, PLEASE USE FREELY





CHROME OR BLACK POWDERCOATING

| RUGGED AND DURABLE



ANTI STATIC GROUND CHAIN



ANTI-STATIC /SAFETY



NYLON ROLLER SOFT AND LOW NOISE



SMOOTH /SILENCE/RUGGED/DURABLE

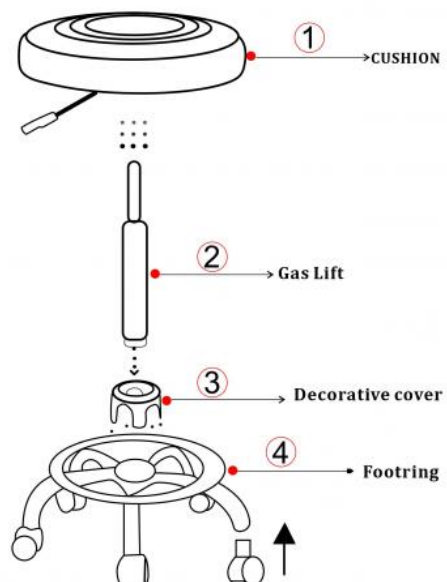


## INSTALLATION DIAGRAM



**CAUTION**

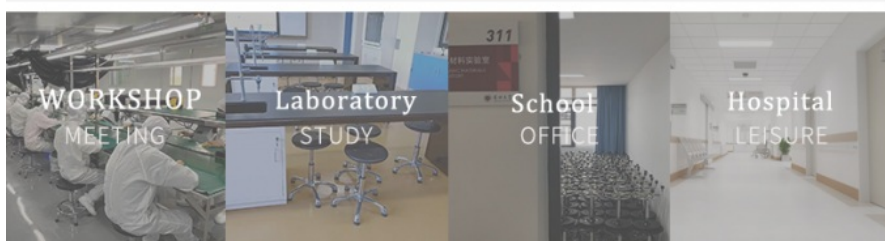
Please remove the cap of the Gas lift before installation





## PLASTIC FOOT/WHEEL

CUSTOMIZABLE



### Packaging & Delivery

Selling Units: Single item or CKD method ,or SKD is acceptable .

Single package size: 57X57X28 cm

Single gross weight: 10.000 kg

Package Type:

Pack by our standard export carton, it is firm.

Carton size depends on package way(see it on packing& shipping lane) and quantity

One 20 feet container can load about 500 pieces this model chair.

Lead Time :

Quantity(Pieces)	1 - 100	>100
Est. Time(days)	15	To be negotiated

Why choose our products .

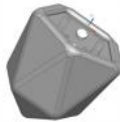
Price advantage	Production from raw material preparation to finished product delivery, with modern automatic imported production equipment, excellent work efficiency, can effectively control the cost
product development	Able to develop various molds in time and quickly according to the changes of customers' market demand.
Quality advantage	pay attention to technology research and development, strictly control quality, follow industry standards, reliable quality
Service advantage	service network all over the country, customers can enjoy convenient, quality service

## HOW TO ORDER

- 1.) 2D file format: DWG, DXF, PDF.  
Our engineers use CAD software.



- 2.) 3D file format: step, stp, igs, prt, etc.  
Our engineer use NX and solidwork software.



- 3.) We start to make samples for customer's confirmation
- 4.) Starts mass production according to the confirmed samples.
- 5.) Packing the products base on customer's request  
A: Normal inner bags packing .  
B: Customized color paper box packing .
- 6.) Shipping : DHL/FEDEX/TNT/COURIER/AIR/TRAIN



- 7.) After sales service .

### Customer's questions with our answers

1. seat height adjustment min. - Max. or (alternatives)  
40-54cm 48-68cm 62-82cm +/- 3CM

2: What's the seats size ?

Answer: A: We will offer our catalogues with size for customer's confirmation .  
B. We can make customerized designs

3. The hardness of the PU parts

Answer : 50degree ~55degree . If you have a special request .We can adjust the hardness also.

4. Seat inclination adjustable yes / no and angle of inclination

Yes .The angle of inclination Can be 90degree ~135degree

5. Backrest angle adjustable or rigid

**Up and down .Front from back**

6. Back section angle Inclination angle

The angle of inclination Can be 90degree ~135degree

7. Fixed foot ring or adjustable in height .

It is adjustable in height .

**8. The weight of the chairs :** Answer Normally around 8kgs ~9kgs

**9. chair dimensions :** Will follow the exactly information which customers need .

**10. packing dimensions**

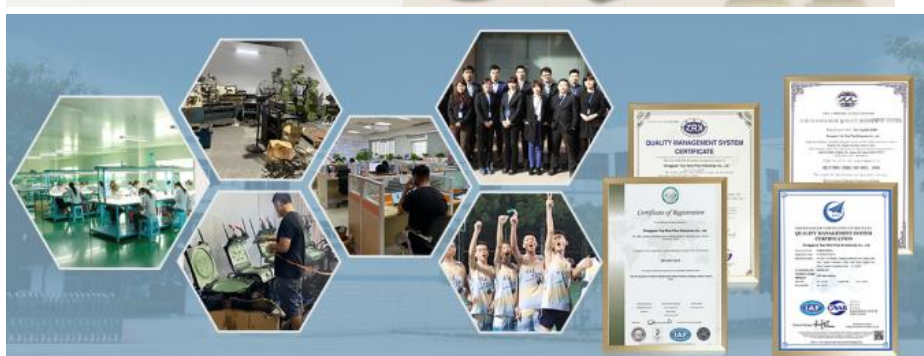
The question will together with #11. Cause we need confirm the packing method with customer .

Some customer need we assemble the chairs .Some customer will separete the seating .cushions and foundations parts.

We will show you the video to teach you how to asseble .So customers can check the best method which they need.

11. MOQ :1pcs.

Company introduction



Dong Guan BER New Material technology Co.,Ltd also named Hong Kong Dain Enterprise Co.,Ltd . Which was set up in the year of 2001. Specialized in producing PU foaming products over 20+ YEARS. The items which we are producing is All kinds of ESD chairs , stand by chairs. PU foaming chairs ,ESD Lab chairs , PU foaming armrest and the PU attachment for washroom . Base on low labor charge , Convenience transportation, more than 500 staffs with 6 sets of Auto – machine water lines for mass production, We achieve a high reputation from our customers all over the world .

We have hundreds of employees who are skillful and have excellent experience in producing the PU foaming products ( Self-cure polyurethane foaming products ). Imported equipment from overseas market. We have our own design department, molding workshop( 8 CNC engrave machines) , PU mix-melting workshop, engineering workshop, rubber injection workshop, injection workshop, assembly workshop, extreme- purifying workshop, packing workshop, printing work shop (including offer printing, screen printing, mobile printing).

Base on our seriously of QA and QC system. Which used to control final quality insurance in the end of each process. The products was finished in our factory directly and highly appreciated with my customers in overseas market.

Base on “ high quality , reasonable price , fast delivery, superior material ,good service “.We have gained much support from our customers .We will highly appreciate with your inquiries ,designs ,samples or mails . If you have any new designs in needs .Please E-mail us . We will reply you ASAP. OEM and ODM orders will be highly appreciated.

Contact phone :86-0769-85983285

Mobilephone : 86-15989665990

Wechat/ whatsapp” 86-15989665990

Mail: [Sabrina@asia-npc.com](mailto:Sabrina@asia-npc.com) [asia\\_npc@yeah.net](mailto:asia_npc@yeah.net)

Address : No#6.Bolang Road.Zhihui Industry Zone.Chi Ling Village ,Hou Jie Town .Dong Guan City .Guang Dong province .China 523964



**Dongguan BER new material technology Co.,Ltd**



008615989665990



[sabrina@asia-npc.com](mailto:sabrina@asia-npc.com)



[pufoammanufacturing.com](http://pufoammanufacturing.com)

Blg2.No 21,Shangjiao road,shangtun,san tun village